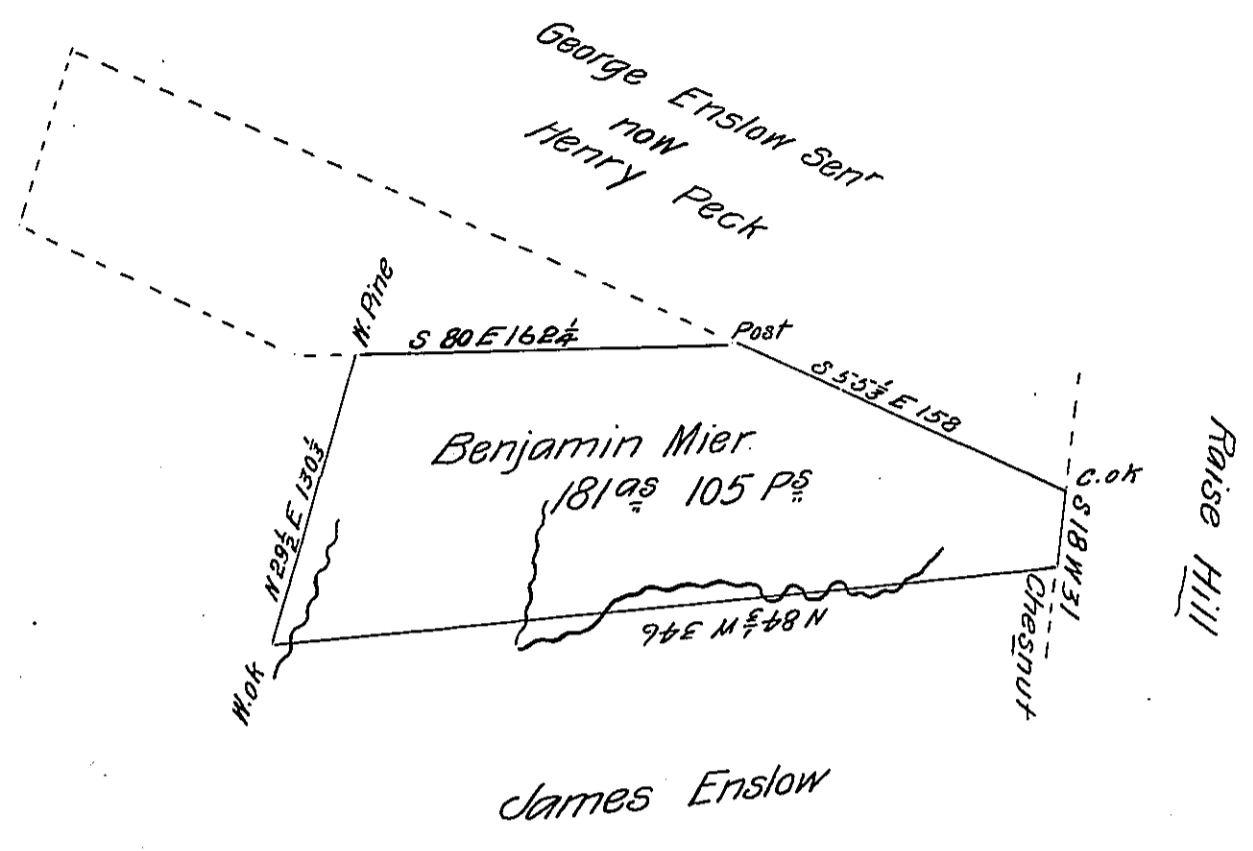


FORM NO. 1.



Situate in Providence Township Bedford County being part
 of two hundred eighty three acres eighty one perches. Surveyed in pursuance
 of a Warrant dated February the 14th 1786. said part surveyed. Dec^r 20th
 A. D. 1815.

James Piper D.S.

To Rich^d T Leech Esq^r S. G.

IN TESTIMONY that the above is a copy of the original remaining on file in
 the Department of Internal Affairs of Pennsylvania, made
 conformably to an Act of Assembly approved the 16th day of
 February, 1833, I have hereunto set my Hand and caused
 the Seal of said Department to be affixed at Harrisburg,
 this twenty ninth day of January 1906.

Geo. R. Brown
 Secretary of Internal Affairs.